

ESF系列 ESF Series



PFC功能



过温保护



过压保护



过载保护



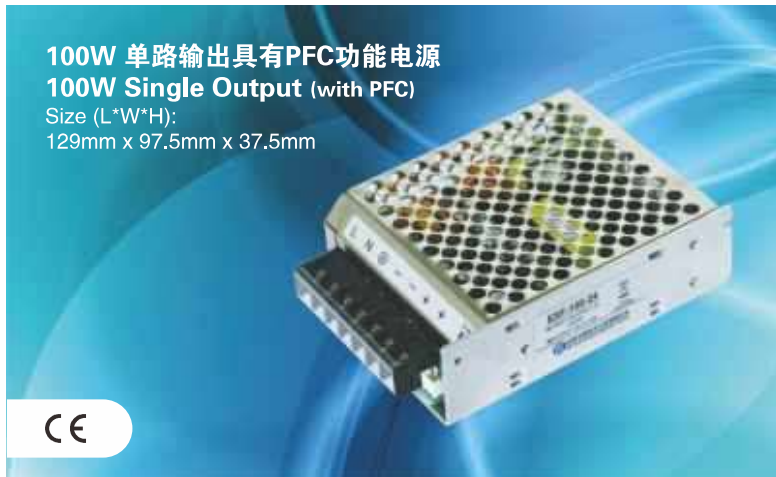
短路保护



遥控开关



低待机功耗



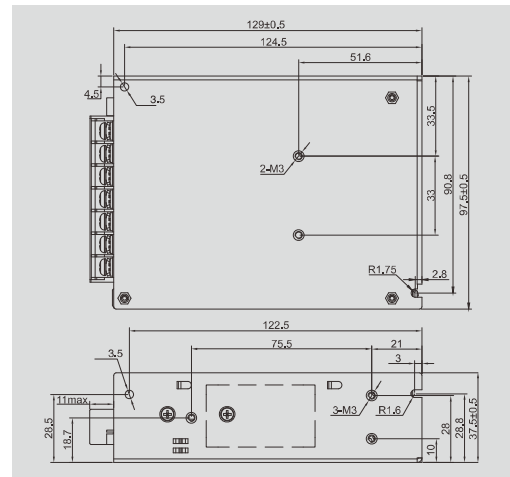
100W 单路输出具有PFC功能电源

100W Single Output (with PFC)

Size (L*W*H):

129mm x 97.5mm x 37.5mm

CE



产品特性

全范围AC输入

PF \geq 0.96@115Vac, \geq 0.93@230Vac

内置遥控开关机功能

待机功耗 \leq 0.5W

通电指示灯

集成化设计, 小体积

过载 / 过压 / 短路 / 过温保护

3年质保

Product features

Universal AC input / full range

PF \geq 0.96@115Vac, \geq 0.93@230Vac

Built-in remote ON/OFF control

Standby power consumption \leq 0.5W

Power on indication

Integrated design, small size

Protections: Overload / Over voltage / Short circuit / Over temperature

3 years warranty

技术特性

输入电压 90~264Vac, 127~370Vdc

输入频率 47~63Hz

冲击电流 40A@230Vac

20A@110Vac 满载冷态

保持时间 \geq 20ms@230Vac 满载

过载保护 110%~150%

过压保护 110%~150% Vo

运行温度 $-20^{\circ}\text{C}\sim 70^{\circ}\text{C}$

安全标准 UL60950-1, EN60950-1

EMC标准 EN55022 Class B, EN55024

绝缘标准 I/P-O/P: 1.5kVac, 1min

I/P-FG: 1.5kVac, 1min

O/P-FG: 0.5kVac, 1min

重量 0.42kg/pcs

Specifications

Input voltage 90~264Vac, 127~370Vdc

Input frequency 47~63Hz

Inrush current 40A@230Vac

20A@110Vac full load cold start

Hold up time \geq 20ms@230Vac full load

Overload protection 110%~150%

Over voltage protection 110%~150% Vo

Operating temperature $-20^{\circ}\text{C}\sim 70^{\circ}\text{C}$

Safety standard UL60950-1, EN60950-1

EMC standard EN55022 Class B, EN55024

Withstand voltage I/P-O/P: 1.5kVac, 1min

I/P-FG: 1.5kVac, 1min

O/P-FG: 0.5kVac, 1min

Weight 0.42kg/pcs

P/N 产品型号	Output 输出	R & N 纹波 & 噪声	Effi. 效率	Load Regulation 负载调整率
ESF-100-5	5V, 17A	100mV	80%	$\pm 2\%$
ESF-100-12	12V, 8.4A	120mV	87%	$\pm 1\%$
ESF-100-24	24V, 4.2A	150mV	88%	$\pm 1\%$
ESF-100-48	48V, 2.1A	200mV	88%	$\pm 1\%$